



■ **Sürtünme Plakası / Sliding Pad**



● **Not / Note**

Tüm köşelere pah kırılacaktır.
Break all sharp edges



Toleranslar tüm ölçüler
DIN 22768-1 standardlarında
All dimensions without tolerance
as per DIN 22768-1

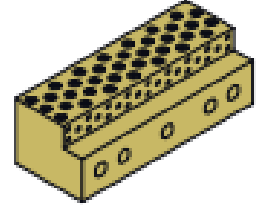


Sipariş Kodu / Order Code
SPL07 - W - L

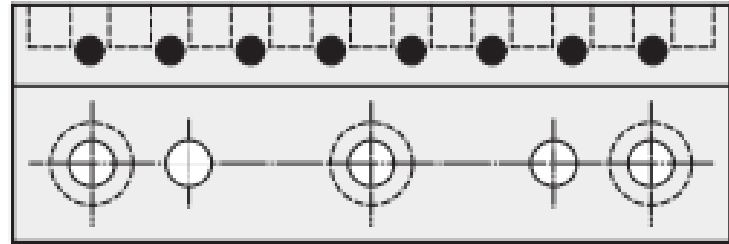
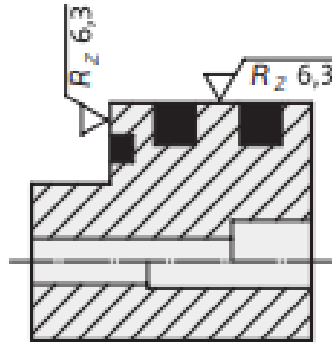
● **Malzeme / Material**

SAE430B + Graphite

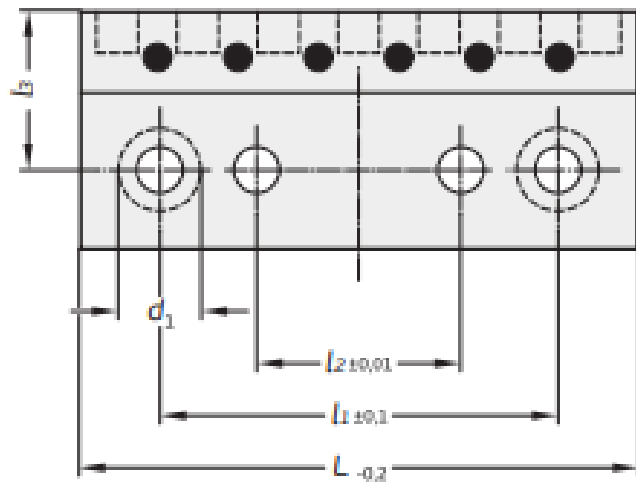
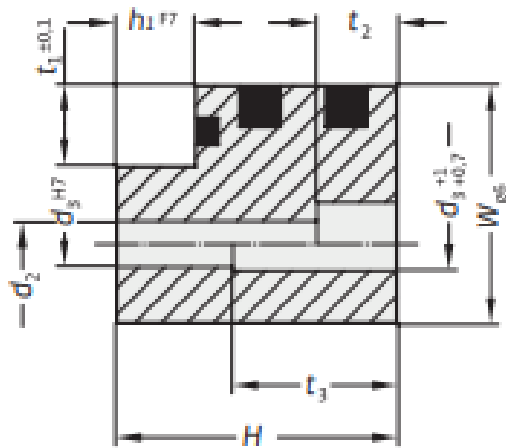
● **Referans Kod / Reference Code**



B



A



Sipariş Kodu Order Code	Form	W	L	H	h ₁	l ₁	l ₂	l ₃
SPL07-16-50	A	16	50	11	4	34	14	9,5
SPL07-16-71	A	16	71	11	4	55	35	9,5
SPL07-16-90	B	16	90	11	4	74	54	9,5
SPL07-20-80	A	20	80	19	5	64	40	12
SPL07-20-100	A	20	100	19	5	84	60	12
SPL07-20-125	B	20	125	19	5	109	85	12
SPL07-25-100	A	25	100	31	6	80	50	15,5
SPL07-25-125	A	25	125	31	6	105	75	15,5
SPL07-25-160	B	25	160	31	6	140	110	15,5
SPL07-30-125	A	30	125	49	8	95	55	18
SPL07-30-160	A	30	160	49	8	130	90	18
SPL07-30-200	B	30	200	49	8	170	130	18

Sipariş Kodu Order Code	d ₁	d ₂	d ₃	t ₁	t ₂	t ₃	Civata Screws
SPL07-16-50	10	5,5	5	5	5,7	-	2
SPL07-16-71	10	5,5	5	5	5,7	-	2
SPL07-16-90	10	5,5	5	5	5,7	-	3
SPL07-20-80	11	6,6	6	5	6,8	9,5	2
SPL07-20-100	11	6,6	6	5	6,8	9,5	2
SPL07-20-125	11	6,6	6	5	6,8	9,5	3
SPL07-25-100	15	9	8	6	9	19	2
SPL07-25-125	15	9	8	6	9	19	2
SPL07-25-160	15	9	8	6	9	19	3
SPL07-30-125	18	11	10	7	11	34	2
SPL07-30-160	18	11	10	7	11	34	2
SPL07-30-200	18	11	10	7	11	34	3