



Sürtünme Plakası / Sliding Pad

Not / Note

Tüm ölçülerin poz kısıtlıdır
Barek ağı sharp edges
Toleranslar için ölçüler
EN 22768-1 standardında
All dimensions without tolerance
as per EN 22768-1

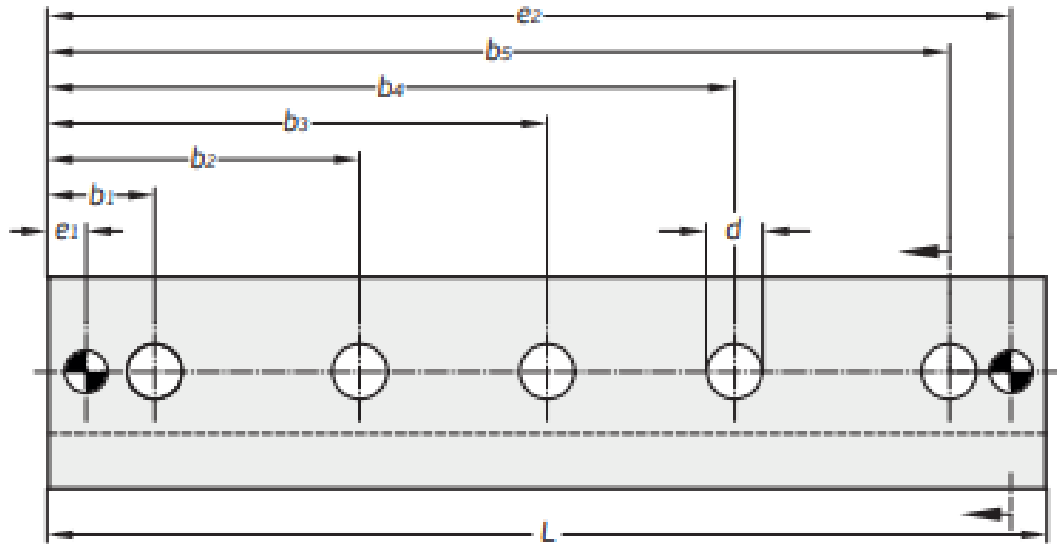
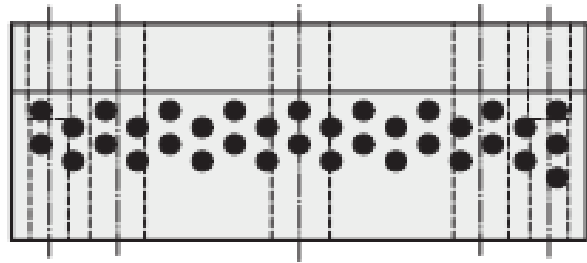
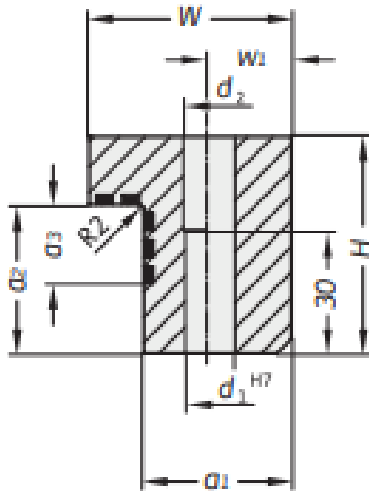
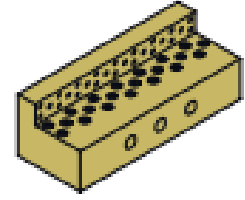
Sipariş Kodu / Order Code
SPL02 - W - L

Malzeme / Material

SAE430B + Graphite

Referans Kod /

Reference Code



Sipariş Kodu Order Code	W	L	H	Ø ₁	Ø ₂	Ø ₃	e ₁	e ₂	W ₁
SPL02-55-100	55	100	55	37	39	23	10	90	20
SPL02-55-160	55	160	55	37	39	23	10	150	20
SPL02-70-160	70	160	75	50	55	35	12,5	147,5	30
SPL02-70-200	70	200	75	50	55	35	12,5	187,5	30
SPL02-70-250	70	250	75	50	55	35	12,5	237,5	30
SPL02-70-400	70	400	75	50	55	35	12,5	387,5	30
SPL02-85-160	85	160	90	63	65	45	15	145	38
SPL02-85-200	85	200	90	63	65	45	15	185	38
SPL02-85-250	85	250	90	63	65	45	15	235	38
SPL02-85-400	85	400	90	63	65	45	15	385	38

Sipariş Kodu Order Code	b ₁	b ₂	b ₃	b ₄	b ₅	d	d ₁	d ₂	Civata Screws
SPL02-55-100	27,5	-	-	-	72,5	13,5	10	11	2
SPL02-55-160	27,5	-	-	-	132,5	13,5	10	11	2
SPL02-70-160	35	-	-	-	125	17,5	12	13	2
SPL02-70-200	35	-	-	-	165	17,5	12	13	2
SPL02-70-250	35	-	125	-	215	17,5	12	13	3
SPL02-70-400	35	125	200	275	365	17,5	12	13	5
SPL02-85-160	42,5	-	-	-	117,5	22	16	17	2
SPL02-85-200	42,5	-	-	-	157,5	22	16	17	2
SPL02-85-250	42,5	-	125	-	207,5	22	16	17	3
SPL02-85-400	42,5	125	200	275	357,5	22	16	17	5