



Kalıp Taşıma Pimi / Lifting Pim

Not / Note

Tüm köşelere yaka kırılacaktır
Break all sharp edges

Toleransız tüm ölçüler
EN 22768-1 standartlarında
All dimensions without tolerance
as per EN 22768-1

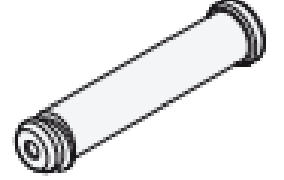
Sipariş Kodu / Order Code
KTP13 - D - L

Malzeme / Material

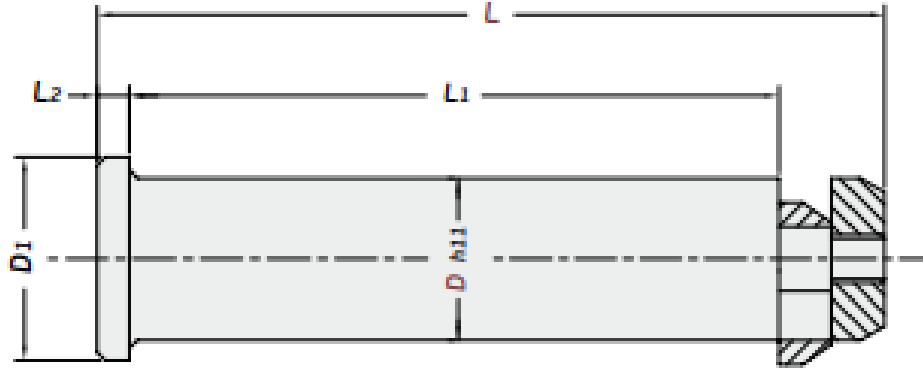
CK45 ~750 N/mm²

Referans Kod / Reference Code

VOLVO



CE



Sipariş No / Order No	D	L	D1	L1	L2	Max. Load (kg)	Max. Dye Weight (kg)
KTP13-40-195	40	195	50	160	8	2500	5000
KTP13-63-285	63	285	75	230	14	8000	16000
KTP13-63-327	63	327	75	275	14	12000	24000
KTP13-80-402	80	402	95	340	15	20000	40000