



**Kalıp Taşıma Pimi / Lifting Pim**

**Not / Note**

Tüm köşelere yaka kırılacaktır  
Break all sharp edges

Toleransız tüm ölçüler  
EN 22768-1 standartlarında  
All dimensions without tolerance  
as per EN 22768-1

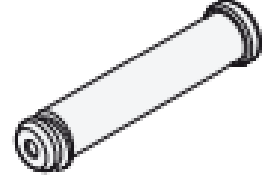
Sipariş Kodu / Order Code  
**KTP12 - D - L**

**Malzeme / Material**

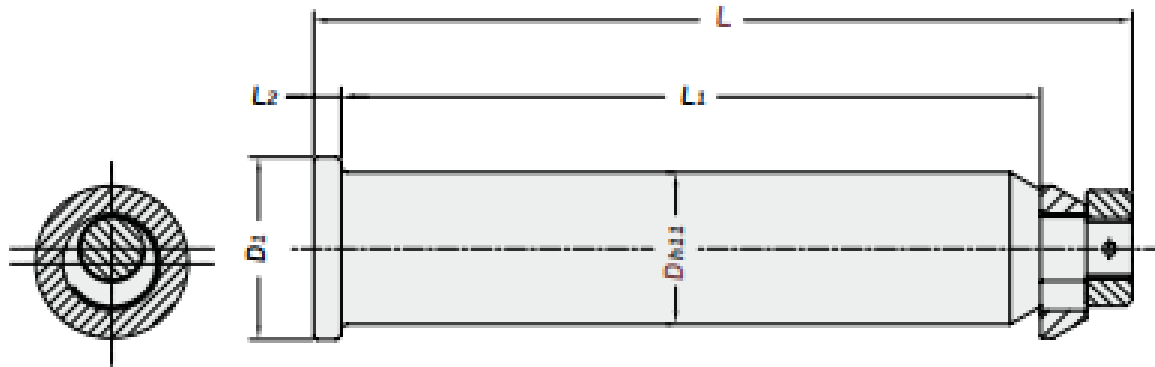
1,7131 (42CrMo4)

**Referans Kod / Reference Code**

OPEL  
GM



**CE**



Sipariş No / Order No	D	L	D1	L1	L2	Max. Load (kg)	Max. Die Weight (kg)
KTP12-32-177	32	177	40	155	5	3400	6800
KTP12-40-220	40	220	50	188	7	5650	11300
KTP12-50-270	50	270	60	230	9	8950	17900
KTP12-63-342	63	342	75	295	16	14350	28700
KTP12-80-387	80	387	89	335	16	26700	53400