



Kalıp Taşıma Pimi / Lifting Pim

Not / Note

Tüm köşelere pah kırılacaktır
Break all sharp edges

Kalınlığız tüm ölçüler
EN 22768-1 standardlarında
All dimensions without tolerance
as per EN 22768-1

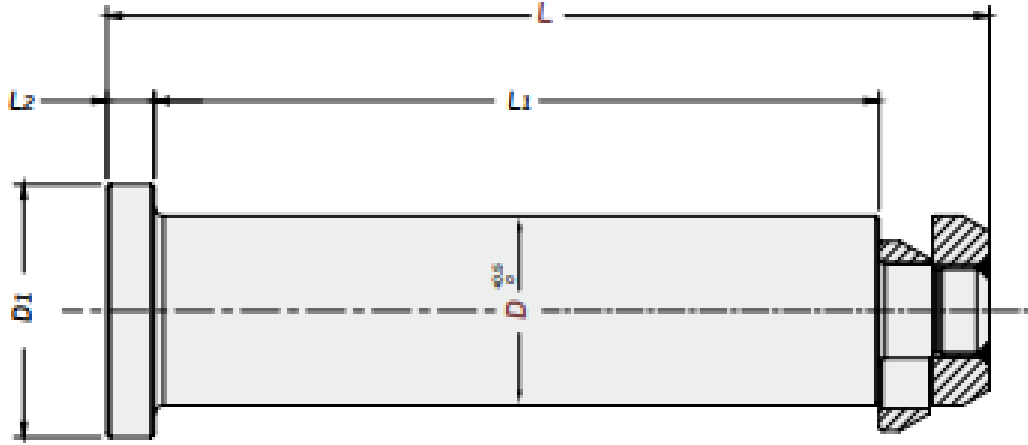
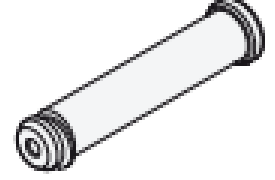
Sipariş Kodu / Order Code
KTP11 - D - L

Malzeme / Material

1,7131 (42CrMo4)

Referans Kod /

Reference Code
NISSAN



Sipariş No / Order No	D	L	D1	L1	L2	Max. Load (kg)	Max.Die Weight (kg)
KTP11-40-210	40	210	60	160	15	2000	4000
KTP11-50-270	50	270	70	220	15	3000	6000
KTP11-60-280	60	280	80	230	15	5000	10000
KTP11-70-300	70	300	90	250	15	7500	15000
KTP11-80-350	80	350	100	300	15	17500	35000