



Kalıp Taşıma Pimi / Lifting Pim

Not / Note

Tüm köşelere pah kırılacaktır
Break all sharp edges

Toleranslar tüm ölçüler
EN 22768-1 standardlarında
All dimensions without tolerance
as per EN 22768-1

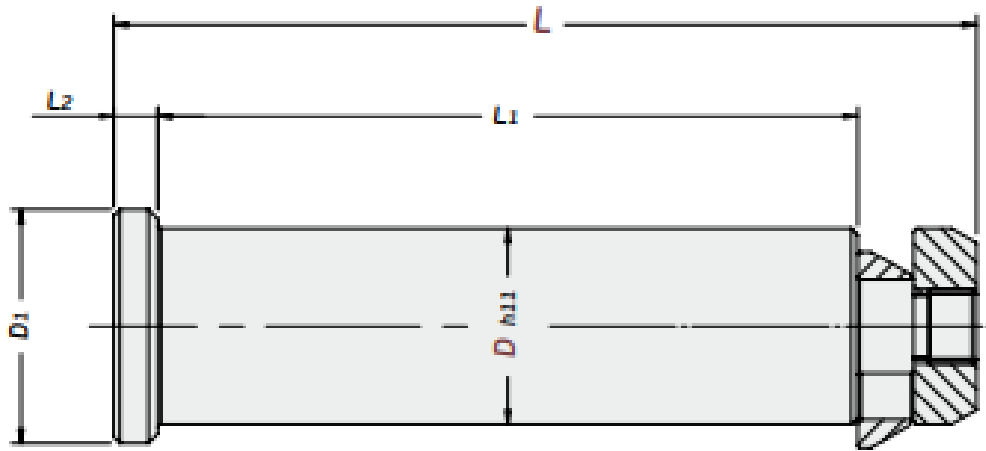
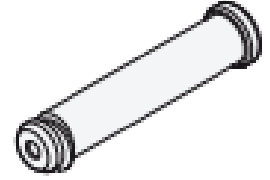
Sipariş Kodu / Order Code
KTP10 - D - L

Malzeme / Material

CK45 - 750 N/mm²

**Referans Kod /
Reference Code**

VW/AUDI



Sipariş No / Order No	D	L	D1	L1	L2	Max. Load (kg)	Max. Die Weight (kg)
KTP10-50-221	50	221	60	182	11	8000	16000
KTP10-63-277	63	277	75	225	14	12500	25000