



**Kalıp Taşıma Pimi / Lifting Pim**

**Not / Note**

Tüm köşelere yaka kırılacaktır  
Break all sharp edges

Toleranslar tüm ölçüler  
EN 22768-1 standardlarında  
All dimensions without tolerance  
as per EN 22768-1

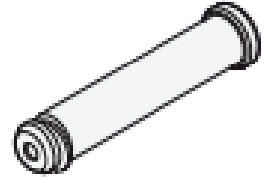
Sipariş Kodu / Order Code  
KTP08 - D - L

**Malzeme / Material**

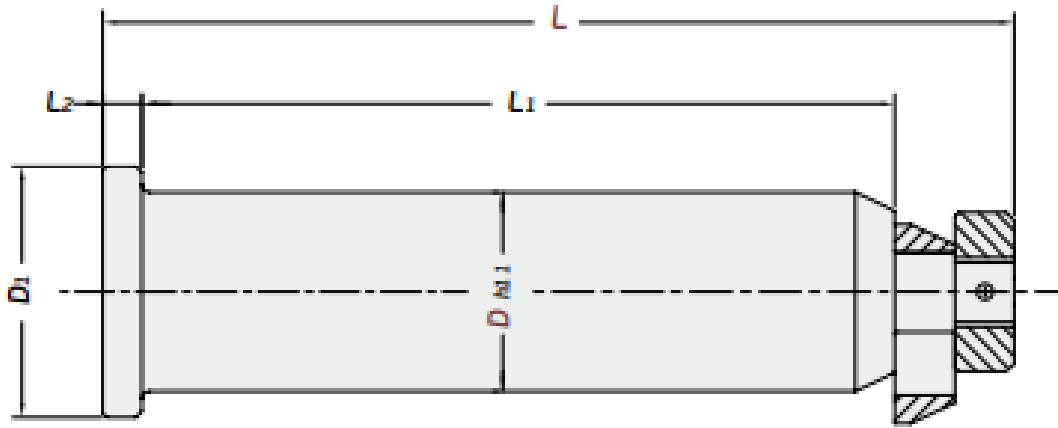
CK45 ~750 N/mm<sup>2</sup>

**Referans Kod /  
Reference Code**

FORD



**CE**



| Sipariş No / Order No | D  | L   | D1 | L1  | L2 | Max. Taş. (kg) | Max. Kalıp Ağırlığı (kg) |
|-----------------------|----|-----|----|-----|----|----------------|--------------------------|
| KTP08-35-165          | 35 | 165 | 45 | 125 | 10 | 1500           | 3000                     |
| KTP08-50-230          | 50 | 230 | 63 | 190 | 10 | 5000           | 10000                    |
| KTP08-63-320          | 63 | 320 | 76 | 280 | 10 | 20000          | 40000                    |
| KTP08-80-370          | 80 | 370 | 89 | 320 | 15 | 30000          | 60000                    |