



**Kalıp Taşıma Pimi / Lifting Pim**



**Not / Note**

Pim köşeleri yuvarlanmalıdır  
Break all sharp edges



Toleranslar tüm ölçüler  
EN 22769-1 standardlarında  
All dimensions without tolerance  
as per EN 22769-1



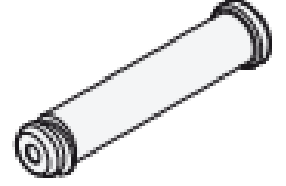
Sipariş Kodu / Order Code  
**KTP04 - D**

**Malzeme / Material**

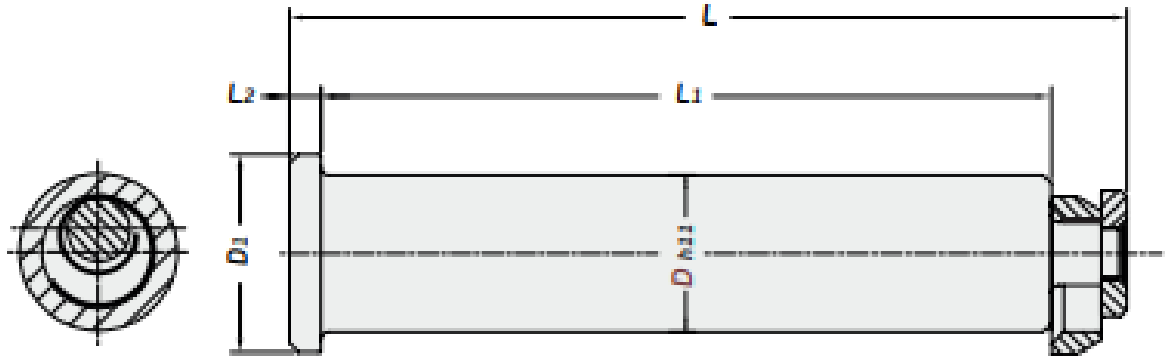
**CK45 - 750 N/mm<sup>2</sup>**

**Referans Kod /  
Reference Code**

**CNOMO  
PSA**



**CE**



Sipariş No / Order No	D	D1	L	L1	L2	Max. Load (kg)	Max. Die Weight (kg)
KTP04-32	32	40	154	132	6	6000	12000
KTP04-40	40	50	197,5	170	8	9000	18000
KTP04-50	50	63	247,5	212	10	14000	28000
KTP04-63	63	80	309	265	12	22500	45000