



Kalıp Taşıma Pimi / Lifting Pim

Not / Note

Tüm köşeler yuvarlanmalıdır
Break all sharp edges

Toleranslar tüm ölçüler
EN 22768-1 standartlarında
All dimensions without tolerance
as per EN 22768-1

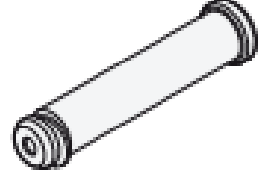
Sipariş Kodu / Order Code
KTP02 - D - L

Malzeme / Material

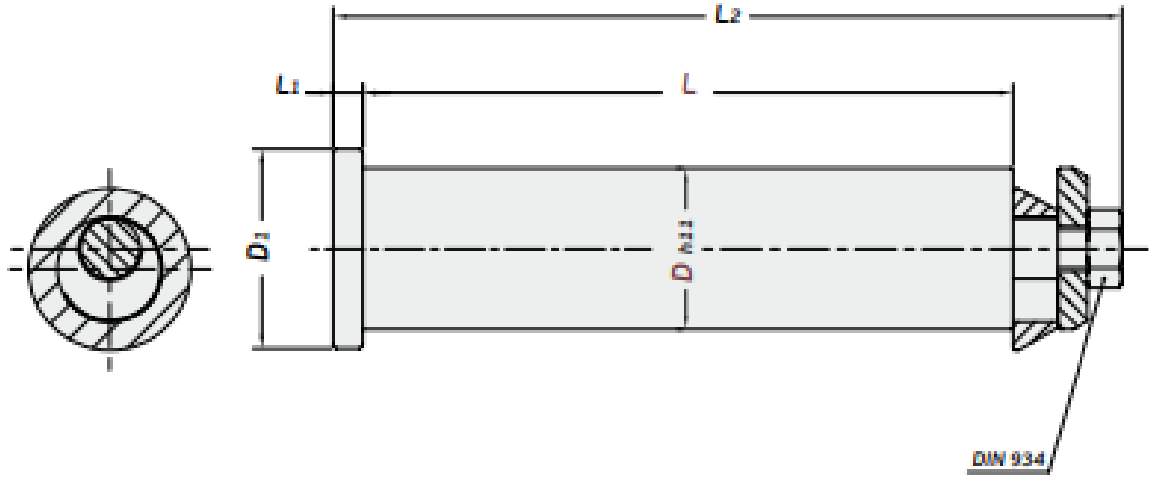
CK45 ~750 N/mm²

**Referans Kod /
Reference Code**

FCA



CE



Sipariş No / Order No	D	L	D1	L1	L2	Max. Load (kg)	Max. Dk Weight (kg)
KTP02-29-150	29	150	38	6	178,5	2000	4000
KTP02-33-170	33	170	43	6	200,5	3200	6400
KTP02-43-195	43	195	53	8	233	5000	10000
KTP02-53-235	53	235	65	10	282	8000	16000
KTP02-53-180	53	180	65	10	227	8000	16000
KTP02-63-295	63	295	78	12	352,5	12000	24000
KTP02-63-215	63	215	78	12	272,5	13000	26000
KTP02-78-355	78	355	95	14	421,5	30000	60000