



Kalıp Taşıma Braketi / Lifting Bracket

Not / Note

Tüm köşelere yuvarlaklaştır
Break all sharp edges

Toleranslar tüm ölçüler
EN 22768-1 standartlarında
All dimensions without tolerance
as per EN 22768-1

Sipariş Kodu / Order Code

KTB10 - A

Malzeme / Material

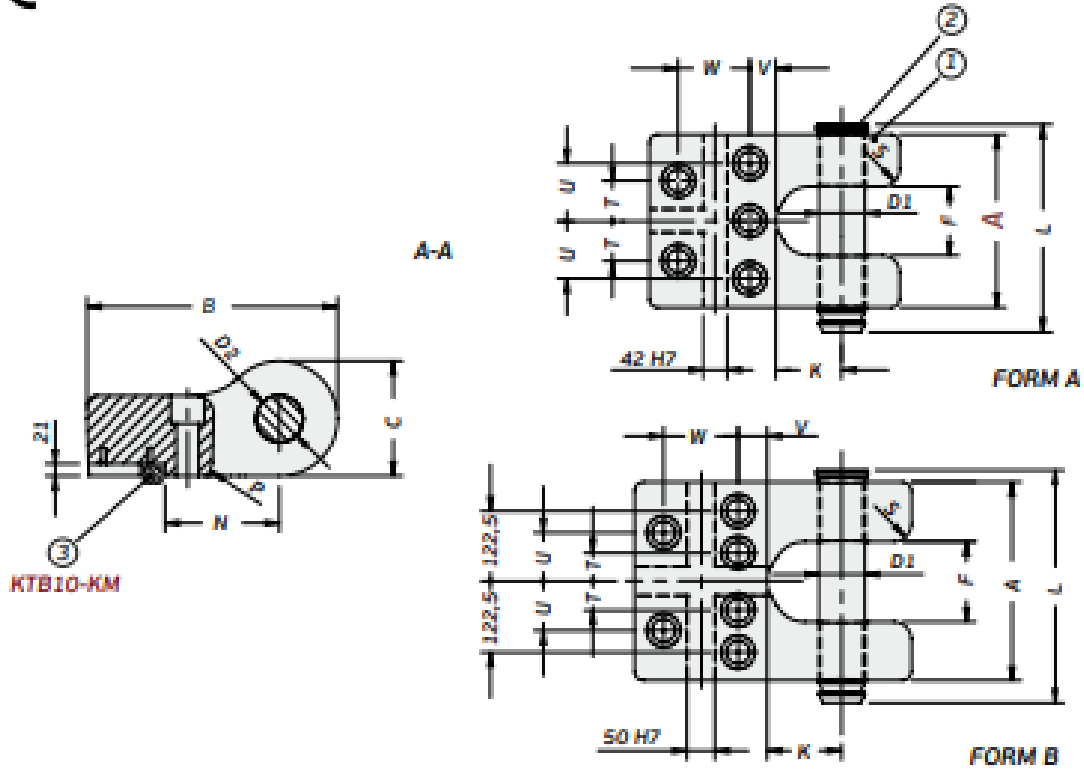
- ①CK45 ~ 750 N/mm²
- ②KTP07

**Referans Kod /
Reference Code**

BMW



CE



| Sipariş No Order No | A | D1 | D2 | B | C | E | F | H | K | L | M | N | P | S | T | V | FORM | DIN 912 | Max. Load (kg) | Max. Dia Weight (kg) |
|------------------------|-----|----|----|-----|-----|-----|-----|-----|-----|-----|----|----|----|-----|----|-----|------|---------|-------------------|-------------------------|
| KTB10-300 | 300 | 80 | 82 | 435 | 200 | 140 | 120 | 115 | 360 | 199 | 30 | 30 | 70 | 100 | 45 | 125 | A | M36x160 | 25000 | 50000 |
| KTB10-345 | 345 | 80 | 82 | 480 | 240 | 170 | 135 | 130 | 405 | 220 | 30 | 30 | 50 | 85 | 50 | 130 | B | M36x200 | 31500 | 63000 |