



Kalıp Taşıma Braketi / Lifting Bracket

Not / Note

Tüm köşelere yaka kırılmalıdır
Break all sharp edges

Toleransız tüm ölçüler
EN 22768-1 standartlarında
All dimensions without tolerance
as per EN 22768-1

Sipariş Kodu / Order Code

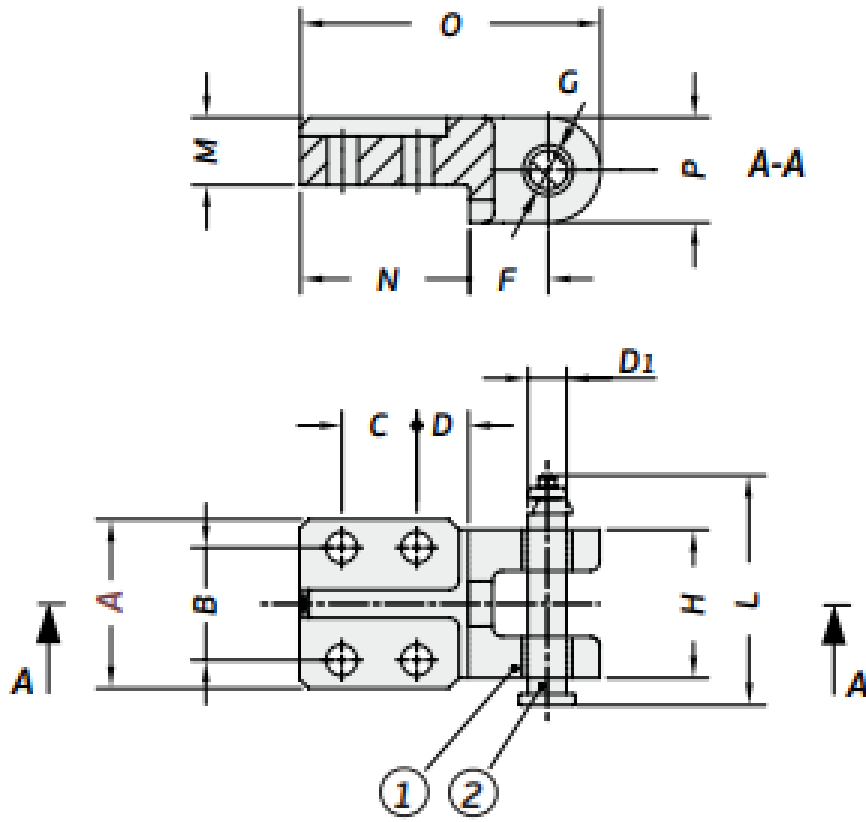
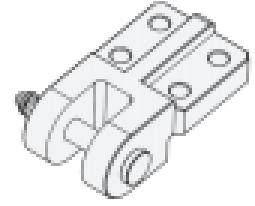
KTB05 - A

Malzeme / Material

- ① CK45 ~750 N/mm²
- ② KTP05

Referans Kod / Reference Code

FCA



Sipariş No Order No	A	B	C	D	D1	F	G	H	L	M	N	O	P	DIN 912	Max. Load (kg)	Max. Die Weight (kg)
KTB05-80	80	50	40	22,5	15,6	39	16	70	102,5	32	80	145	52	M12x45	600	1200
KTB05-90	90	60	60	27,5	20,6	42	21	79	113,5	38	90	160	58	M16x55	1000	2000
KTB05-100	100	65	65	32,5	25,6	60	26	90	128,5	50	120	215	70	M20x80	2000	4000