



**■ Kam Geri Çekme Kolu / Positive Return Follower**

● **Not / Note**

Tüm köşelere yaka kırılacaktır  
Break all sharp edges  
Toleranssız tüm ölçüler  
EN 22768-1 standartlarında  
All dimensions without tolerance  
as per EN 22768-1

Sipariş Kodu / Order Code

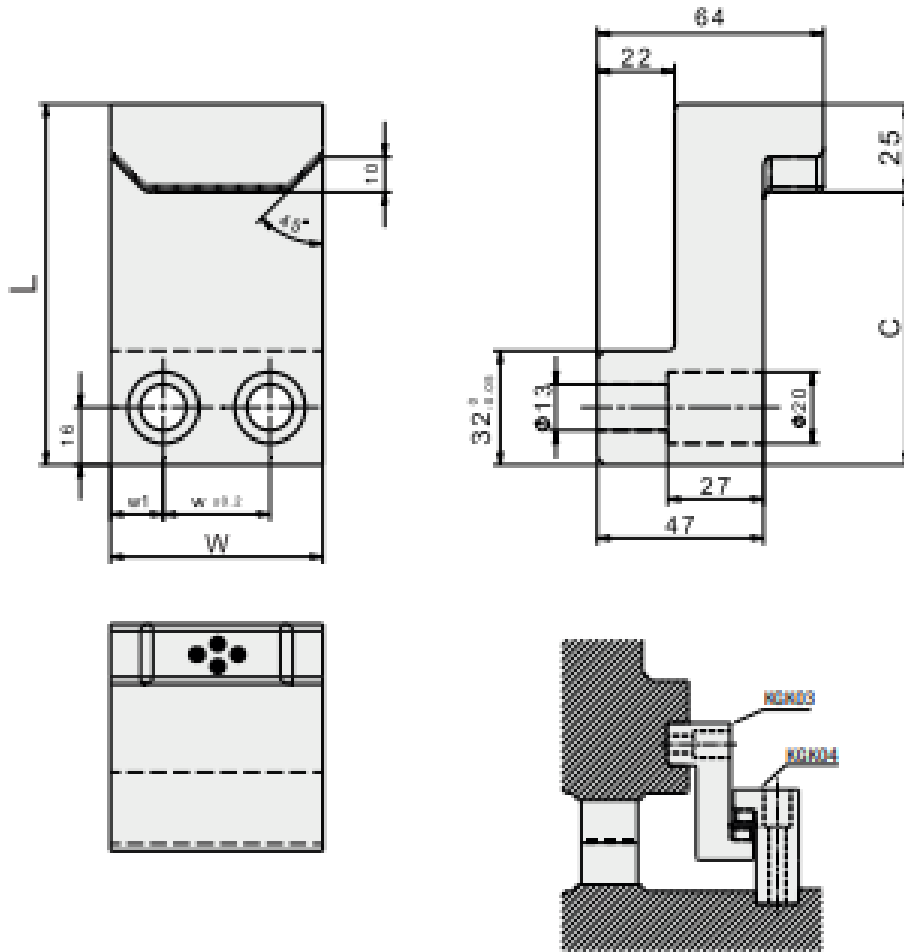
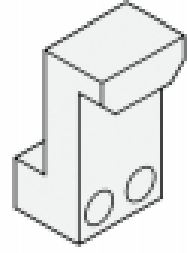
**KGK03 - type - W - L**

● **Malzeme / Material**

Tip / Type :  
B = SAE430B (Bronze)  
S = CK45 HRC 55-59

● **Referans Kod / Reference Code**

-



Sipariş Kodu / Order Code	W	L	W	W <sub>1</sub>	C
KGK03-(B/S) - 60 - 82	60	82	30	15	57
KGK03-(B/S) - 60 - 102	60	102	30	15	77
KGK03-(B/S) - 60 - 112	60	112	30	15	87
KGK03-(B/S) - 80 - 82	80	82	40	20	57
KGK03-(B/S) - 80 - 102	80	102	40	20	77
KGK03-(B/S) - 80 - 112	80	112	40	20	87