



■ Kalıp Askı Broşu / Pod Retainer Pin

● **Not / Note**

Tüm köşelerle yedi kırılacaktır
Break all sharp edges

Toleransız tüm ölçüler
EN 22768-1 standartlarında
All dimensions without tolerance
as per EN 22768-1

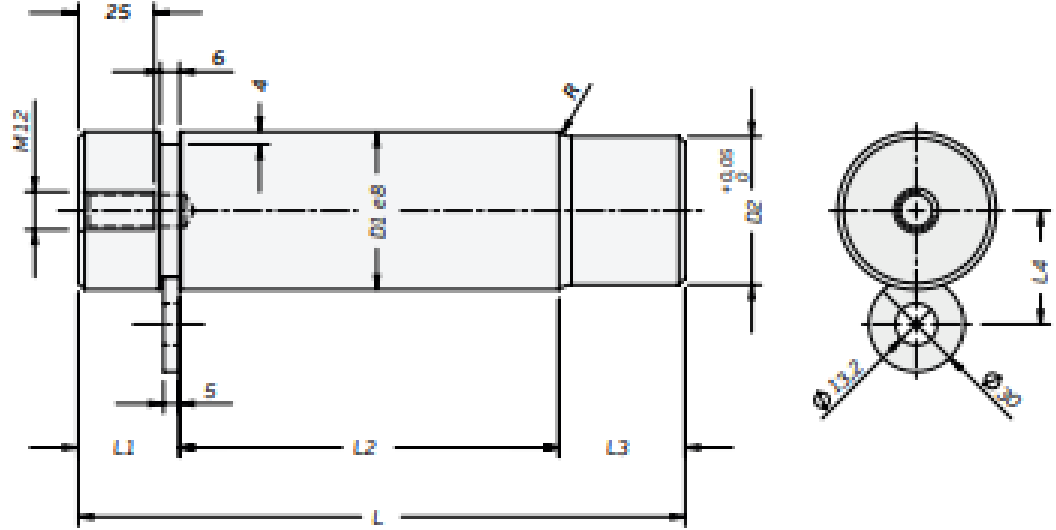
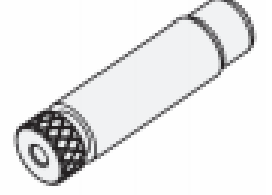
Sipariş Kodu / Order Code
KAB05 - D₁ - L

● **Malzeme / Material**

1.7131

● **Referans Kod / Reference Code**

BMW



Sipariş Kodu / Order Code	D ₁	L	D ₂	L ₁	L ₂	L ₃	L ₄	R	Load (kN)
KAB05-32-105	32	105	29	22	58	25	27	4	3
KAB05-32-122	32	122	29	22	75	25	27	4	3
KAB05-40-139	40	139	37	32	75	32	31	5	5
KAB05-40-159	40	159	37	32	95	32	31	5	5
KAB05-50-167	50	167	47	32	95	40	36	6	7,5
KAB05-50-192	50	192	47	32	120	40	36	6	7,5
KAB05-63-202	63	202	60	32	120	50	42,5	6	12,5
KAB05-63-237	63	237	60	32	155	50	42,5	6	12,5