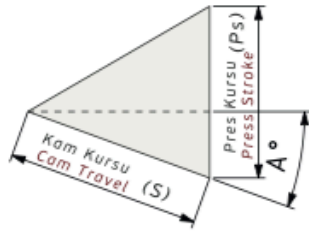


DKH-52 Bilgilendirme / Information

- Çalışma Kuvveti / Working Force : (300.000 Baskı/Stroke) 38,2 kN (3,9 tonf)
- Sürücü Geniřliđi / Slider Width : 52 mm
- Çalışma Açısı / Work Angle : 0°
- Sipariř Örneđi / Order Example : DKH-52-00-40

Kam Diyagram / Cam Diagram

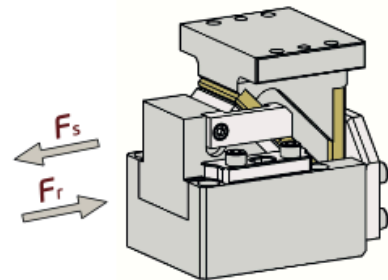
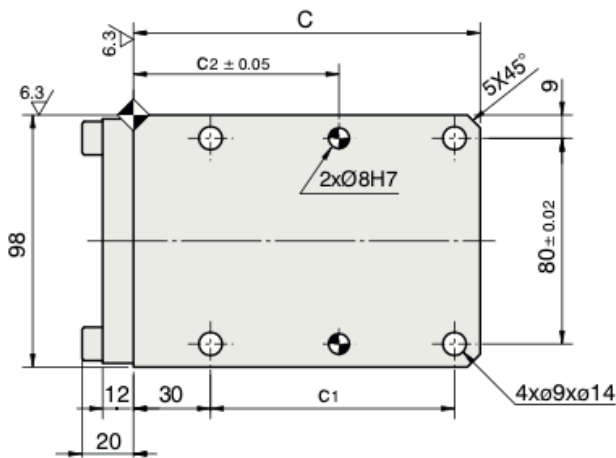
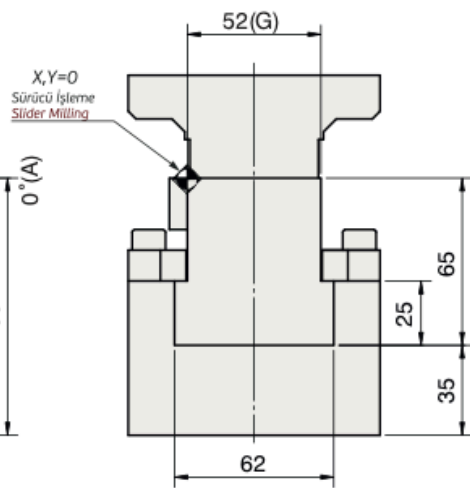
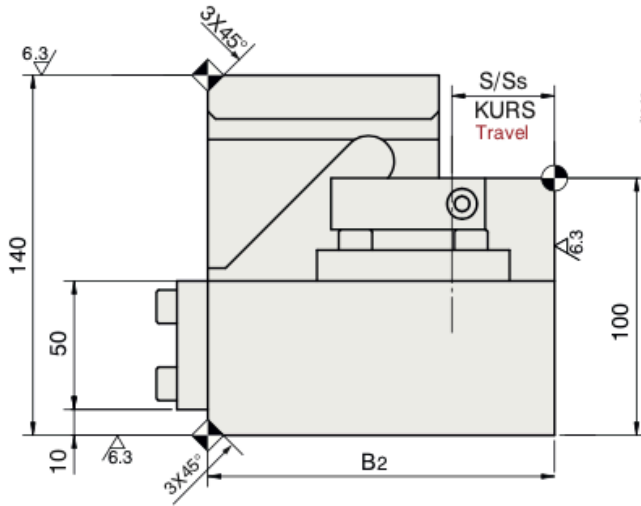
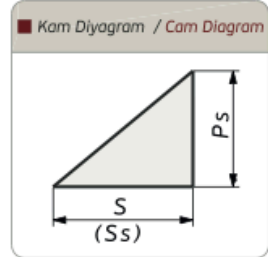
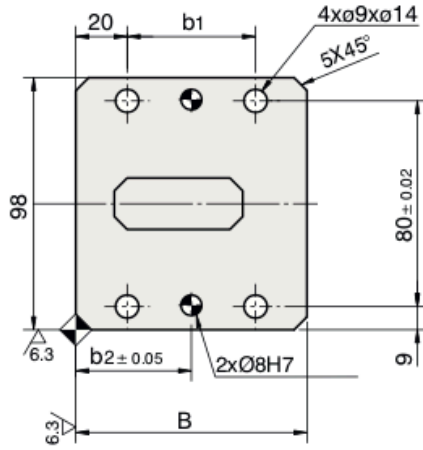


Sipariř Örneđi / Order Example

Kam Kodu Cam Code	Sürücü Geniřliđi Slider Width (mm)	Çalışma Açısı Work Angle (°)	Kurs Travel (mm)	Opsiyon Kodu / Option Code		
	(G)	(A)	(S)	---	---	---
DKH	- 52	- 00	- 25			

DKH-52 Teknik Bilgiler / Technical Informations

Çalışma Yüzeyi/Mounting Surface		Çalışma Açısı Work Angle (°)	Kam Kuru/Cam Travel Stroke (mm)	Çalışma Kuvveti Working Force	Yay Kuvveti Spring Force	Gazlı Yay Kuvveti Gas Spring Force
(G)	(Gh)	(A)	(S)			
52	65	00	25	300.000 Baskı/Stroke 38,2 kN (3,9 tonf)	1050 N (108 kgf)	
52	65	00	40		1050 N (108 kgf)	
52	65	00	60		1050 N (108 kgf)	



Sipariş Kodu Order Kode	Açı Angle (A)	Ölçüler / Dimensions (mm)									
		S	Ps	Ss	B	B2	b1	b2	C	c1	c2
DKH-52-00-25	00	25	25	25	80	120	40	40	120	80	70
DKH-52-00-40	00	40	40	40	90	135	50	45	135	95	80
DKH-52-00-60	00	60	60	60	110	180	70	55	180	140	55

 ORDER	Kod / Code	(G)	(A)	(S)
	DKH	52	00	25