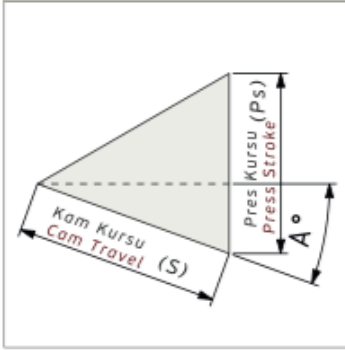


**DKH-200 Bilgilendirme / Information**

- Çalışma Kuvveti / Working Force : (300.000 Baskı/Stroke)176,4 kN(18,0tonf)
- Sürücü Geniřliđi / Slider Width : 200 mm
- Çalışma Açısı / Work Angle : 0°
- Sipariř Örneđi / Order Example : DKH-200-00-60

**Kam Diyagramı / Cam Diagram**

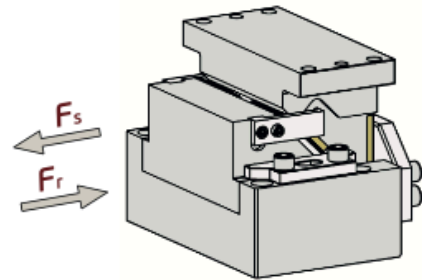
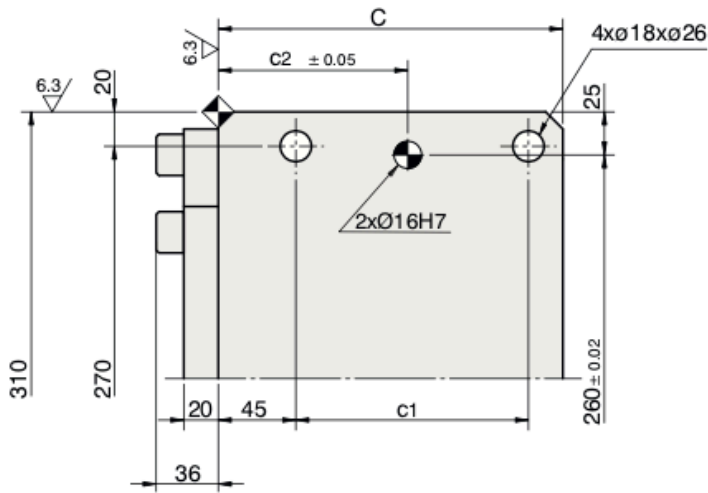
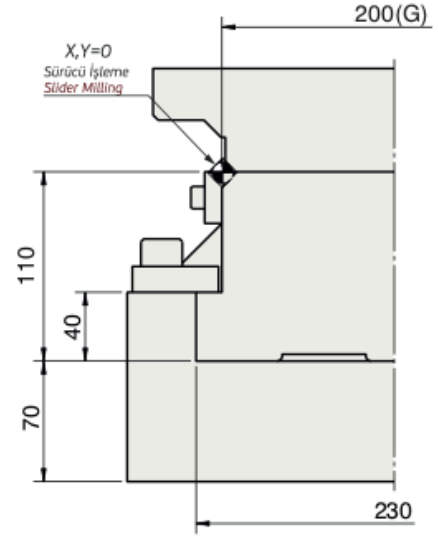
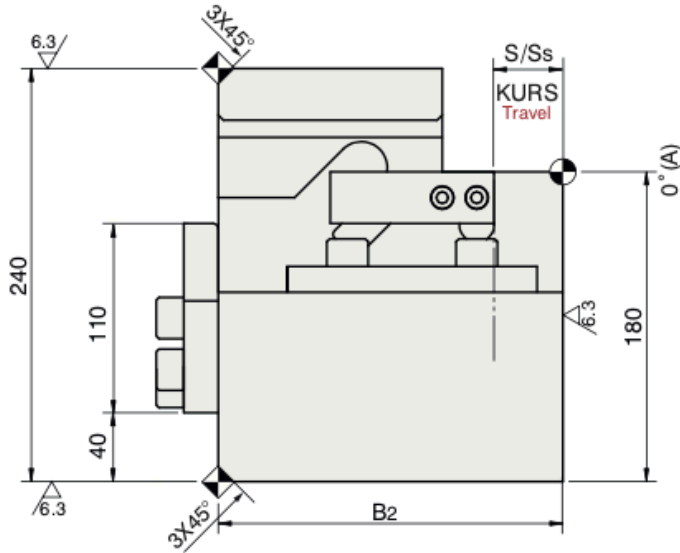
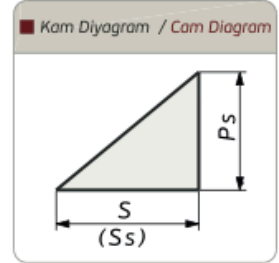
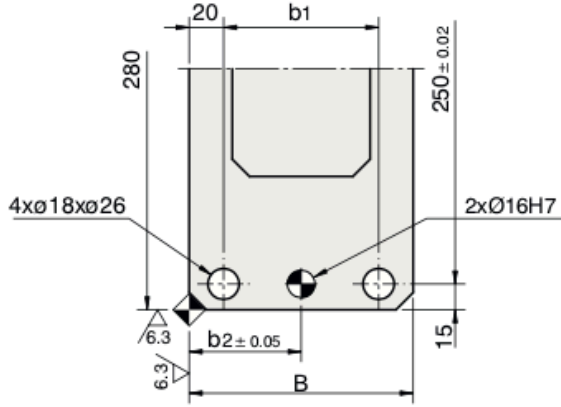


**Sipariř Örneđi / Order Example**


Kam Kodu Cam Code	Sürücü Geniřliđi Slider Width (mm)	Çalışma Açısı Work Angle (°)	Kurs Travel (mm)	Opsiyon Kodu / Option Code		
	(G)	(A)	(S)	---	---	---
DKH -	200	- 00	- 40			
DKH -	200	- 00	- 60			

**DKH-200 Teknik Bilgiler / Technical Informations**

Çalışma Yüzeyi/Mounting Surface		Çalışma Açısı Work Angle (°)	Kam Kuru/Cam Travel Stroke (mm)	Çalışma Kuvveti Working Force	Yay Kuvveti Spring Force	Gazlı Yay Kuvveti Gas Spring Force
(G)	(Gh)	(A)	(S)			
200	110	00	40	300.000 Baskı/Stroke		7940 N (810 kgf)
200	110	00	60	176,4 kN (18,0 tonf)		7940 N (810 kgf)



Sipariş Kodu Order Kode	Açı Angle (A)	Ölçüler / Dimensions (mm)									
		S	Ps	Ss	B	B2	b1	b2	C	c1	c2
DKH-200-00-40	00	40	40	40	130	200	90	65	200	135	110
DKH-200-00-60	00	60	60	60	150	220	110	75	210	145	120

 <b>Kod / Code</b>	<b>(G)</b>	<b>(A)</b>	<b>(S)</b>
DKH	200	00	40