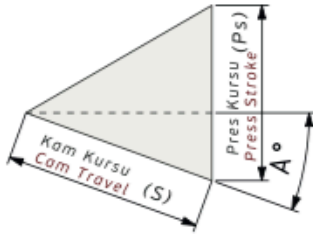


AKVS-110 Bilgilendirme / Information

- Çalışma Kuvveti/Working Force : (1.000.000 Baskı/Stroke)117,7kN(12,0tonf)
- Sürücü Geniřlięi / Slider Width : 110 mm
- Çalışma Açısı / Work Angle : 0°~20°
- Sipariř Örneęi / Order Example : AKVS-110-15

Kam Diyagram / Cam Diagram

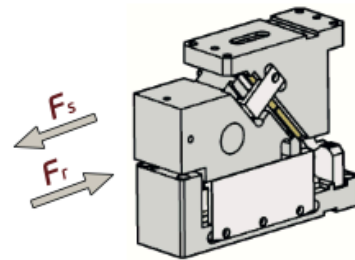
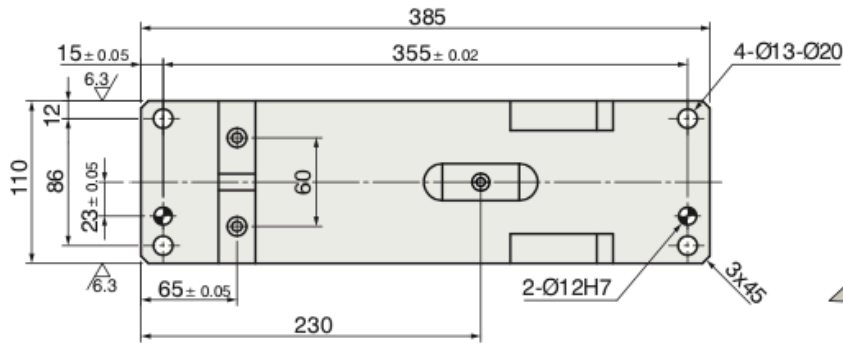
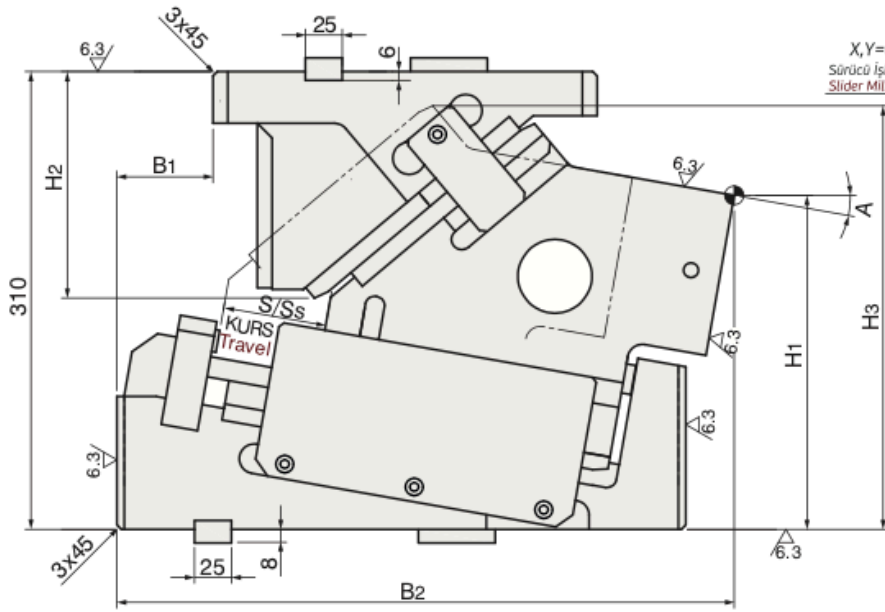
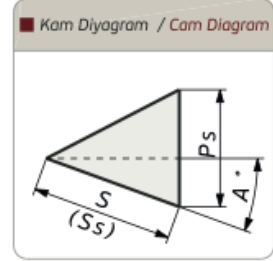
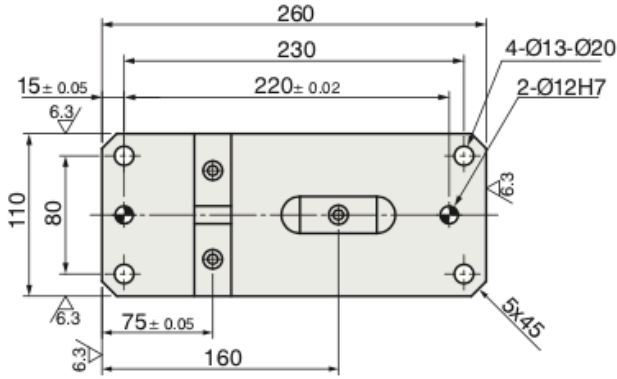


Sipariř Örneęi / Order Example


Kam Kodu Cam Code	Sürücü Geniřlięi Slider Width (mm)	Çalışma Açısı Work Angle (°)	Opsiyon Kodu / Option Code			
			(G)	(A)	---	---
AKVS - 110 - 00						
AKVS - 110 - 15						
AKVS - 110 - 05						

AKVS-110 Teknik Bilgiler / Technical Informations

Çalışma Yüzeyi/Mounting Surface		Çalışma Açısı Work Angle (°)	Kam Kuruřu/Cam Travel Stroke (mm)	Çalışma Kuvveti Working Force	Yay Kuvveti Spring Force	Gazlı Yay Kuvveti Gas Spring Force
(G)	(Gh)	(A)	(S)			
110	110	00	70	1.000.000 Baskı/Stroke 117,7 kN (12,0 tonf)		11760 N (1200 kgf)
110	110	05	70			11760 N (1200 kgf)
110	110	10	70			11760 N (1200 kgf)
110	110	15	70			11760 N (1200 kgf)
110	110	20	70			11760 N (1200 kgf)



Kam Kodu Cam Kode	Açı Angle (A)	Ölçüler / Dimensions (mm)							
		S	Ps	Ss	H1	H2	H3	B1	B2
AKVS-110	00	70	83,4	108,9	250,0	177,8	274,3	-25	385,0
AKVS-110	05	70	75,8	98,6	235,6	168,5	278,2	-40	401,6
AKVS-110	10	70	70,0	90,0	226,1	153,4	286,8	-65	417,8
AKVS-110	15	70	65,5	82,5	215,8	138,7	294,0	-75	428,4
AKVS-110	20	70	61,9	76,0	204,5	124,7	299,6	-90	438,5

 Kod / Code	(G)	(A)
AKVS	110	20