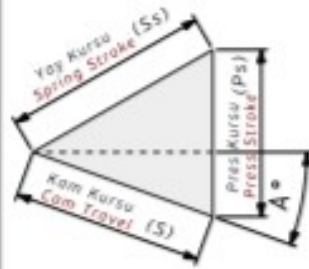


AKHV-220 Bilgilendirme / Information

- Çalışma Kuvveti / Working Force : (300.000 Baskı/Stroke) 700 kN (72 tonf)
- Sürücü Genişliği / Slider Width : 220 mm
- Çalışma Açısı / Work Angle : 0° - 75°
- Sipariş Örneği / Order Example : AKHV-220-55

Kam Diyagramı / Cam Diagram

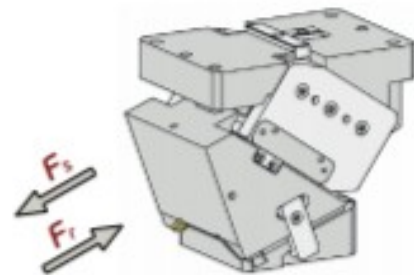
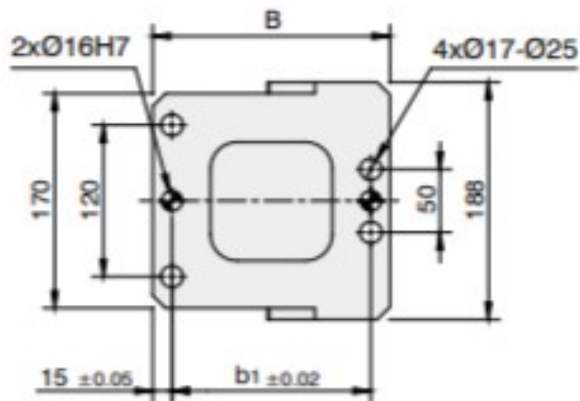
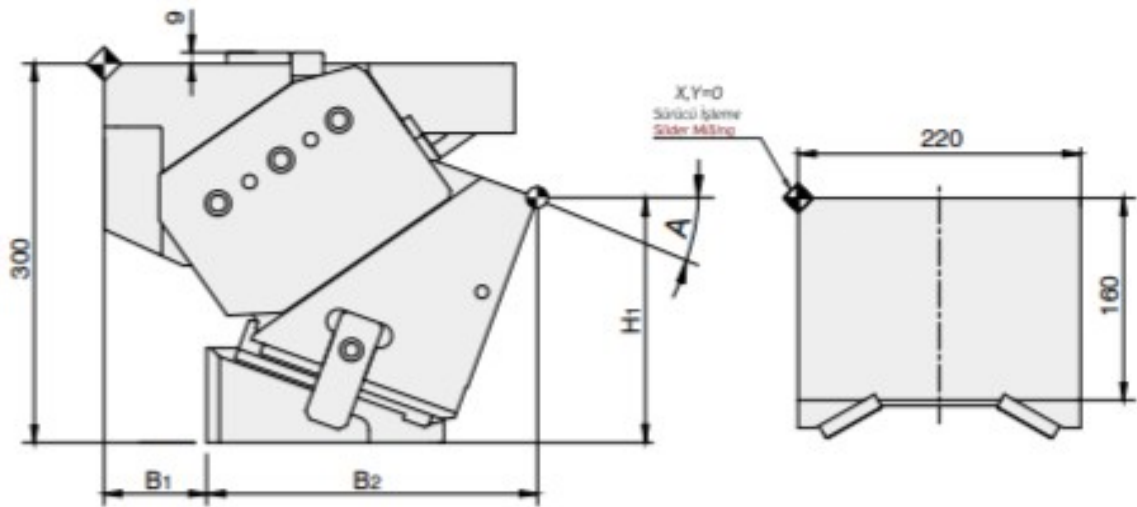
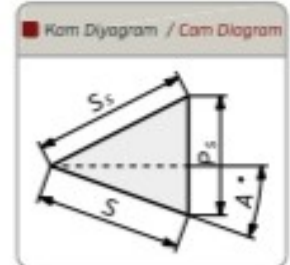
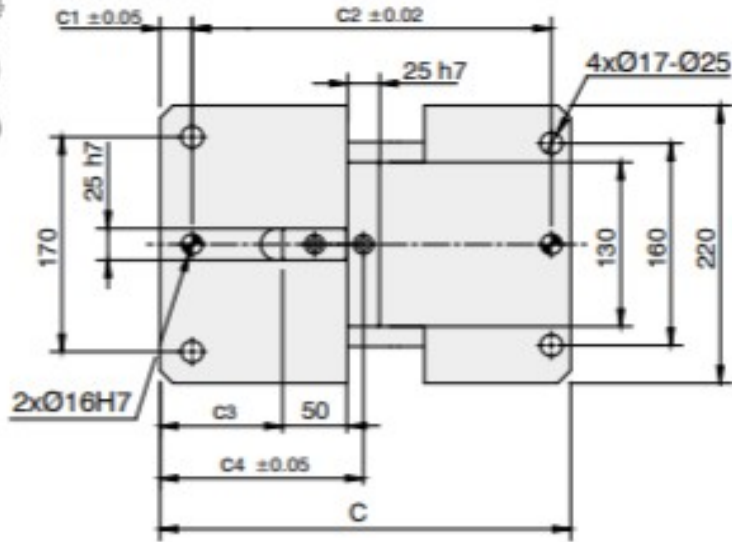


Sipariş Örneği / Order Example

Kam Kodu Cam Code	Sürücü Genişliği Slider Width (mm)	Çalışma Açısı Work Angle (°)	Opsiyon Kodu / Option Code			
	(G)	(A)	---	---	---	---
AKHV	- 220	- 60				


AKHV-220 Teknik Bilgiler / Technical Informations

Çalışma Yüzeyi/Mounting Surface		Çalışma Açısı Work Angle (°)	Kam Kuruşu/Cam Travel Stroke (mm)	Çalışma Kuvveti Working Force	Yay Kuvveti Spring Force	Gazlı Yay Kuvveti Gas Spring Force
(G)	(Gh)	(A)	(S)			
220	160	00	32,1	300.000 Baskı/Stroke 700,0 kN (72,0 tonf)		19600 N (2000 kgf)
220	160	05	35,5			20580 N (2100 kgf)
220	160	10	35,9			21462 N (2190 kgf)
220	160	15	39,7			22344 N (2280 kgf)
220	160	20	43,6			23226 N (2370 kgf)
220	160	25	45,2			24108 N (2460 kgf)
220	160	30	50,0			25480 N (2600 kgf)
220	160	35	52,9			26068 N (2660 kgf)
220	160	40	59,2			27832 N (2840 kgf)
220	160	45	64,1			28910 N (2950 kgf)
220	160	50	73,1			31262 N (3190 kgf)
220	160	55	81,9			31752 N (3240 kgf)
220	160	60	96,6			35672 N (3640 kgf)
220	160	65	91,4			38416 N (3920 kgf)
220	160	70	100,8			43610 N (4450 kgf)
220	160	75	95,1			46060 N (4700 kgf)



Kam Kodu Cam Kode	Açı Angle (A)	Ölçüler / Dimensions (mm)						
		S	P _s	S _s	H ₁	B	B ₁	B ₂
AKHV-220	00	32,1	38,3	50	240,0	215	80	228,0
AKHV-220	05	35,5	38,4	50	235,6	210	80	237,6
AKHV-220	10	35,9	41,6	50	210,7	200	80	243,8
AKHV-220	15	39,7	42,4	50	205,0	190	80	251,7
AKHV-220	20	43,6	43,6	50	194,0	185	80	257,8
AKHV-220	25	45,2	47,8	50	187,1	195	60	285,1
AKHV-220	30	50,0	50,0	50	183,3	190	60	297,1
AKHV-220	35	52,9	55,3	50	167,2	185	60	303,0
AKHV-220	40	59,2	59,2	50	157,0	180	60	313,2
AKHV-220	45	64,1	66,4	50	145,6	160	45	303,6
AKHV-220	50	73,1	73,1	50	129,7	160	45	310,4
AKHV-220	55	81,9	84,2	50	113,3	161	45	316,7
AKHV-220	60	96,6	96,6	50	98,9	159	45	326,7
AKHV-220	65	91,4	93,2	40	86,9	161	45	322,8
AKHV-220	70	100,8	100,8	35	79,4	163	45	327,1
AKHV-220	75	95,1	96,2	25	53,0	145	35	317,1

Kam Kodu Cam Kode	Açı Angle (A)	Ölçüler / Dimensions (mm)					
		b ₁	C	c ₁	c ₂	c ₃	c ₄
AKHV-220	00	155	320	25	280	64,0	127,0
AKHV-220	05	155	320	25	280	71,5	134,5
AKHV-220	10	155	320	25	280	79,0	142,0
AKHV-220	15	155	320	25	280	88,0	151,0
AKHV-220	20	155	320	25	280	95,5	158,5
AKHV-220	25	150	360	15	330	104,5	167,5
AKHV-220	30	150	360	15	330	112,0	175,0
AKHV-220	35	150	360	15	330	119,5	182,5
AKHV-220	40	150	360	15	330	127,0	190,0
AKHV-220	45	130	365	15	335	98,0	161,0
AKHV-220	50	130	365	15	335	104,0	167,0
AKHV-220	55	130	365	15	335	89,5	152,5
AKHV-220	60	130	365	15	335	96,5	159,5
AKHV-220	65	130	365	15	335	96,5	159,5
AKHV-220	70	130	365	15	335	96,5	159,5
AKHV-220	75	115	365	15	335	96,5	159,5

	Kod / Code	(G)	(A)
ORDER	AKHV	220	40